

# New England Carnival Glass Association

New England  
**Carnival Glass**  
Association



www.NECGA.com

## President

Steven Lindquist

hfdpilotsteve@cox.net

## Vice President

Don Dorais

ksd24ddd24@cox.net

## Treasurer

Gary Sullivan

stevenandgary@cox.net

## Secretary/Recording Secretary

Kristine Dorais

## Webmaster & Bulletin Editor

Steven Lindquist

## Board of Directors

Harold March

Chase Marquis

David Noyes

Bob Preseau

Norm Spicher

Vol. 41 No. 1

**CARNIVAL GLASS FOREVER**

APRIL 2022



Clockwise from top left : NW Three Fruits bowl in Blue, IG Imperial Contemporary Holly Plate in Red, NW Three Fruits Medallion Spatula Footed Bowl in Green, Dugan Mae West Candlesticks in Egyptian Lustre, Hansen Contemporary Santa Fairy Lamp in Red, and Imperial Ripple Vase in Amethyst.

**Upcoming Club Meeting**  
**Sunday, April 10th 10:00 a.m.**

**Hampton Inn—Wells, Maine**  
**Theme: Springtime Flowers and new finds**

Happy Spring NECGA members,

I hope you managed to stay warm and were safely active this past winter. Some of you became snowbirds and went south, while many of us stayed up here in New England. Just when things were turning around, Omicron was the new word and spread quickly. The Tampa Bay Carnival Glass Club decided it best to protect their attendees health and cancelled mid-January. I do feel bad for them as they had to find another venue to hold the convention as their normal spot, the Dolphin Beach Resort, contacted them to say they were shutting down its convention facilities until further notice. The Texas Carnival Glass club also had to find a new location three months before their convention as they were notified by its hotel to say it was shutting its doors. I have been hearing and seeing hotels all around the country closing up due to the impact of Covid.



I am happy to report that a hotel with convention capabilities has been located and contracted with for our 2022 Convention and auction. NECGA will be at the Courtyard by Marriott in Cromwell, CT. The guest room rate has been secured for \$109 a night (plus taxes). We will be able to bring in pizzas and grinders and prepared snacks. A quick on and off I-91 and there are many restaurants and other retail stores nearby. There is an outdoor atrium with seating and firepit. I am quite energized that this will meet the needs of the club, auctioneer, and consignor. Matthew Wroda Auctions will be selling the collection of Mavis and the late George Loescher of Wisconsin. I am hoping that Mavis will be able to attend as she plans to as it is a complete honor for the club. More information will be coming your way in the coming weeks. Thursday afternoon, tentatively, there will be a Stretch Glass auction from the Nita Cole collection.

Rewinding to December, after the club meeting, we had a catered luncheon from a local restaurant. We had chicken parmigiana, meatballs and ziti, Buffalo and regular chicken tenders, lasagna, and salad all followed by cheesecake and tiramisu. The room was very quiet as everyone was enjoying the wonderful meal. It is always a treat at each December club meeting to have a catered meal.

The Spring Fling is right around the corner and I hope that you will attend. It is always nice to get together up in Wells, Maine by the ocean front and have a nice seafood dinner. We return to the Hampton Inn in Wells, Maine. \$129/night +taxes. You can call directly or for those reading electronically use the following weblink to book your reservations. Click on this: [New England Carnival Glass Assoc April 2022 Reservations](#)

This will be a year of auctions in the Carnival Glass world as there will be several prominent collections sold. HOACGA (Carroll Cook and Bob Grissom), ACGA (Larry Yung, Sr.), ICGA (Don Clark) and NECGA. This is not to say that the other clubs will not have just as wonderful glass for sale. Save your money up!

The special membership deal came to a close at the end of 2021. The club will start collecting dues sometime this year. I am just raising awareness—don't shoot the messenger.

On December 31st, after 38 years with my employer, I retired. I am truly enjoying the start of my new chapter. I have been working on more genealogy and I have now over 33,000 people in my family tree and ever growing. Also, I have been working on my Swedish using Rosetta Stone and my cousins in Sweden. I am baking more and learning to NOT have a schedule. Other activities I plan on are picking up my stained glass, gardening and bourbon tasting (wink-wink). I am hopeful that Gary and I will be able to travel more here in the US and across the pond. Our first trip was driving down to Brenham, Texas to be seminar presenters at the Texas Carnival Glass Club's convention.

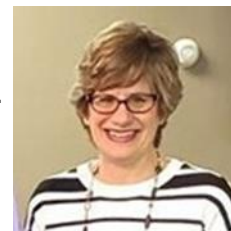
Best regards,

Steve



### From: Sunday, December 5th meeting.

Present at the meeting: Kris & Don, Gary & Steve, Ben, Paul & Yvette Berube, Harold & Lynne and Norm. Show & Tell took place at 10:00 a.m. and the meeting began at 11:08 a.m.



### Old business:

1. Last Club Meeting Minutes/Report: Gary made a motion, seconded by Norm. All were in favor.
2. Treasury Report: Norm made a motion to accept the report and it was seconded by Paul. All were in favor.
3. Board meetings: none
4. With regard to the upcoming Spring Fling at the Hampton Inn in Wells, Maine, Robin talked with the hotel and booked a block of rooms for the weekend of April 10th (our meeting date). The cost is \$129 per night plus tax. You can use this link [New England Carnival Glass Assoc April 2022 Reservations](#) Members can use to make their reservations online without speaking with a hotel representative. If you would like to call and make a reservation, the number is (207) 646-0555 and mention NECGA.

### New Business:

1. The banquet food was not up to standard...in fact, it was terrible. The hotel heard our grumblings and when Steve went to pay the hotel our convention balance, the hotel told us they were comping our banquet costs to the tune of \$1,530.00. That was great news, but we have to remember that our banquet, hospitality and glass room rental costs along with not meeting our room night (less than 40)/banquet dinner (34 meals were ordered) quota, we actually would have lost money. What helped tremendously was our mini auction proceeds and the Wroda's donation to the club showing that the convention actually profited by approximately \$1,700.00.
2. Steve mentioned that he and Gary would start looking at hotels closer to the New York/CT border as we could possibly pull carnival collectors from Midwestern states. He was interested in a Ramada Hotel in Windsor Locks, CT. The club is possibly looking to find a hotel that allows pizza, sub sandwiches to be brought in by a third party and a "catered" OR banquet dinner option. We do not have the option to do this at the Doubletree in Leominster, MASS.
3. Jim Wroda's 2022 auction donation to the club will be capped at \$2,500
4. The zero tolerance policy proposal will be postponed until further notice. Whatever is decided on would need to be put in the bulletin for members to vote on its approval as it would have to be added to the bi-laws.
5. 2022 NECGA meeting dates are as follows: April 10th (Wells, Maine), June 5th, August 7, October 16 and December 4th. Dave Noyes will contact the American Legion Hall in Gardiner to reserve them.

Our Meeting adjourned at 11:45 a.m

Next Meeting: Sun, April 10<sup>th</sup> at 10 a.m.  
Location: Hampton Inn, Wells, Maine  
Theme: Springtime Flowers and new finds



# Treasurer's Report

Below is a full year 2021 Treasurer's Report showing the balance in the checking account at \$11,180.02. The only activity in 2022 is that we paid a \$400 deposit to the Cromwell Courtyard leaving a balance at February 28, 2022 of 10,780.02.

| NECGA<br>Treasury Report<br>For the period Jan 1, 2021 thru Dec 31, 2021 |                    | NECGA<br>Convention Report<br>2021   |                   |
|--|--------------------|--------------------------------------|-------------------|
| Opening Fund Balance - Jan 1, 2021                                       | \$10,094.57        |                                      |                   |
| Revenues:  |                    | Convention Revenue:                  |                   |
| Dues   | 84.00              | Banquet Meals (29 @ \$30 & 2 @ \$38) | 946.00            |
| Fees   | 0.00               | Banquet Mini Auction                 | 1,145.00          |
| Convention   | 1,766.29           | Tag Sale Table                       | 97.00             |
|  |                    | Sale Room Table Rentals              | 80.00             |
|  |                    | 50 / 50 Board                        | 180.00            |
|  |                    | Auctioneer Donation                  | 1,700.00          |
| Total Revenue  | 1,850.29           | Total Convention Revenue             | 4,148.00          |
| Expenses:  |                    | Convention Expenses:                 |                   |
| Postage  | 109.00             | Banquet Meals (34 X \$41.20)         | 1,400.80          |
| Ink/Paper  | 205.84             | Pizza Party Thurs Night              | 284.33            |
| Meeting Food/Supplies  | 0.00               | Auction Lunch Sat                    | 185.19            |
| Web site   | 0.00               | Member Glass Room Rental             | 0.00              |
| Hall Rental  | 100.00             | Banquet & Hospitality Room Rentals   | 0.00              |
| PayPal Fees  | 0.00               | Total Hotel Bill                     | 1,870.32          |
| Dec Meeting Food   | 350.00             | Banquet Speaker Fee/Room Nights      | 356.92            |
|  |                    | Display Awards                       | 75.00             |
|  |                    | Waitress Tip                         | 50.00             |
|  |                    | Hospitality Room                     | 29.47             |
| Total Expense  | 764.84             | Total Convention Expenses:           | 2,381.71          |
| Increase /(Decrease) in Fund Balance                                     | 1,085.45           |                                      |                   |
| Ending Fund Balance - Dec 31, 2021                                       | <u>\$11,180.02</u> | Net Convention Profit / (Loss)       | <u>\$1,766.29</u> |

## New England Carnival Glass Association Membership Application

Dues: \$ 18.00 per year per household if mailed; \$15.00 per year if emailed. (Membership renewal is due on your anniversary date)

Name \_\_\_\_\_

Address \_\_\_\_\_

City \_\_\_\_\_ State \_\_\_\_\_ Zip Code \_\_\_\_\_

Telephone # \_\_\_\_\_ - \_\_\_\_\_ Email address: \_\_\_\_\_

**Send application form and dues (U.S. funds) to:**  
**Gary Sullivan, 671 Ridge Road, Wethersfield, CT 06109**

Membership includes, bi-monthly meetings, bulletins and all functions and outings. If you would like the bulletin emailed to you (vs. mail), please let us know on this form.

Make checks payable to N.E.C.G.A.

Email \_\_\_\_\_ Mail \_\_\_\_\_

## To pay with Paypal:

Paypal payments are accepted from anywhere in the world, but the cost is \$18 /mailed or \$15/emailed and must be in United States dollars. To pay with Paypal, go to the Paypal website and send payment to newenglandcarnivalglass@gmail.com. You must include all of your contact information, including name, mailing address and email address with your payment (in the memo section is fine).

# Show and Tell:

## Theme: Holly patterns, Candlesticks, Bells and New Finds



NW Holiday Plate, Marigold



Fenton Spector's Dept. Store Plate, Marigold



Fenton Holly Bowl, Marigold (it glows)



Fenton Tumble-Up set, Celeste Blue



Fenton #549 Candlesticks, Celeste Blue top, black base



Fenton Contemporary Christmas Compote, Plum Opal



Vineland Florentine Candlestick, Black Amethyst



Cambridge Inverted Strawberry Powder Jar, Marigold



NW Grape and Cable Powder Jar, Green



Imperial Premium Swirl Variant Candlesticks, Smoke



Imperial Corn Bottles, Teal and White



Fenton #549 Candlesticks, Celeste Blue



NW #657 Candlesticks, Russet



Fenton Florentine Candlesticks, Celeste Blue



## Dugan Maple Leaf table set----blue by David Noyes

For quite some time, I have wanted a Dugan Maple Leaf table set in blue, a quite scarce set in a very scarce color. Why? Growing up in Vermont, Maple Leaf has significant meaning to me because it reminds me of my childhood days growing up around my grandparent's farm. The ritual every Spring was to tap the Maple trees, gather the sap and boil it down to make "Vermont Gold", the famous Vermont Maple Syrup. To this day, I will not eat pancakes or French toast without "the real stuff" from Vermont!! Very good on vanilla ice cream as well!!! Dugan made a limited amount of blue base glass in any pattern, especially table sets. They made table sets in Circle Scroll, Dahlia, Maple Leaf, Stork & Rushes and Wreathed Cherry, but none had any blue pieces other than Maple Leaf to my knowledge. In the Maple Leaf pattern, fewer than 15 sales are recorded in HOC or Doty's websites for either complete table sets or individual table set pieces in blue dating back to 2001. In 2017 while at the infamous Lloyd Ward auction a blue butter dish base came up for auction and I said there's a place to start, but will I ever find a matching lid?? After almost 4 years of searching, I had come up empty!! Come March of 2021, a blue complete butter dish appeared in a Sheffield auction, I had to have it, and yes, I



I came away with it without having to break the bank. Another one would show up in August 2021 at a Burns auction, but I already had mine. Fast forward to November 2021 and another Sheffield auction and a blue creamer appeared!!! Yes, I had to have it, and yes, I came away with it. After 4 plus years, I was halfway there, having a complete butter dish and a creamer. Will I ever find the covered sugar bowl?? There are no recorded sales of just covered sugar bowls in blue in either Doty's or HOC, and only 4 sales for full table sets that included the scarce covered sugar bowl and one sale for a table set with a sugar bowl without a lid!!!!!!!!!! Fast forward to

December 2021, somewhere around the 15th, as I scanned eBay one morning, to my complete surprise there is a new 7-day listing for the covered sugar bowl, the spooner and the creamer all in one auction from a seller in California!!!!!!!!!!!! Holy crap, I have found the holy grail of blue Maple Leaf!! I have to have these items. I anxiously wrote to the seller asking if he would convert the listing to a "Buy it Now" auction for his opening bid price. No dice on that one, he wanted the auction to play out!! Over the next few days, the "watchers" mounted on the listing, but no bids. The day before the auction was to end, I decided to open the bidding. Over the next 24 hours or so, a couple more watchers, but no other bidders. The auction would be ending at 9:01 PM on 12/23. As the evening wore on, no other bidders, but plenty of watchers!!! Will I win? Will I be beat out by a last-minute bidder?? I better protect myself from that, so I submitted another "max" bid amount hoping a "sniper" would not top it. To my complete surprise, the auction ended, I was the only bidder and won the 3 items for the opening bid amount, a modest one given the scarcity of the items, especially the sugar bowl. The items arrived 6 days later, are gorgeous and I now have my long-awaited complete table set in blue!!!!!!!!!!!! Do I use the creamer to hold maple syrup the next time I have French toast?? I think NOT!!!



We were asked to put together a document that would assist us in being able to more correctly identify colors of pieces sold at auction, so this is the result of that request.

First, the caveats:

In the carnival glass collecting community, through the years colors have been assigned that *do NOT match* those color names in other venues (color wheel, gemstone, etc.) but that are rather locked in place and will be called something specific in our hobby. *[As an example, Sapphire Blue in a gemstone may look more Blue or even closer to Violet Blue than the color we have assigned in carnival glass collecting.]*

Second, colors can look different on each person's device or monitor (as well as with a different photo background).

Third – some colors seem to be very much manufacturer specific (i.e. Violet Blue is, to date, only found on Imperial patterns).

Fourth – when we started collecting some 35 years ago, almost any light blue base with an opalescent edge was thrown into the 'Aqua Opalescent' classification, and many of them, using this document, will not be correct. We will attempt to sort them out over a period of time.

And lastly, because often you don't have something to compare, it is exceedingly difficult to remain consistent. We do our best to stay the course, but there will always be points of contention.

These are the blue shades currently in the Hooked on Carnival database as of July 2021.

**Aqua** (Sits between green and blue in the color wheel.)



**Aqua/Marigold Overlay** (Sits between green and blue in the color wheel – the glass has a marigold iridescence that may cover almost the entire piece – usually leaving the feet or base as the only real way to tell the color.)



**Aqua Opal** (Aqua Opalescent – Aqua base color with white or light blue, milky edge or tips). In carnival glass, MANY pieces that are actually a different shade of blue (but with an opal edge) are classified as Aqua Opal. Incorrect, **BUT** because there is no ‘color wheel’ for us, that is the term.

The Corn Vase below looks a true Aqua Opal, the Tree Trunk vases run the gamut from what looks like Aqua Opal to Blue Opal or Sapphire Blue Opal, but they were all classified as Aqua Opal.)



You will need to go by the pattern as much as by the actual color.

**Aqua Opal Butterscotch** (Aqua Base color with white or light blue, milky edge or tips **AND** has a predominantly marigold/orangey iridescence.)

The top two left Tree Trunk vases could be classified as Aqua Opal Butterscotch. The Corn Vase has some marigold/orangey on the top 1/3 but would probably not be as likely to be called Butterscotch.

**Aqua Opal Pastel** (Aqua Base color with white or light blue, milky edge or tips **AND** has a predominantly light iridescence with blues/pinks/yellows– very easy to see the base glass color.)

The same issue is seen with this color as the other two variations of Aqua Opal – often the actual blue tone in the base is NOT aqua, **BUT** with many patterns, no matter the actual shade of blue, it will be reported as Aqua Opal Pastel. This phenomenon is usually pattern based.

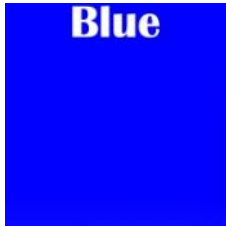




**Aquamarine** (see *Ice Blue for Carnival references* -Described as a mixture of green, cyan and blue, this color is strictly used by Hooked for **Stretch Glass** at this time. It is what carnival collectors usually call Ice Blue (and will typically be frosty). The definition simply says, 'a very pale blue color'.)



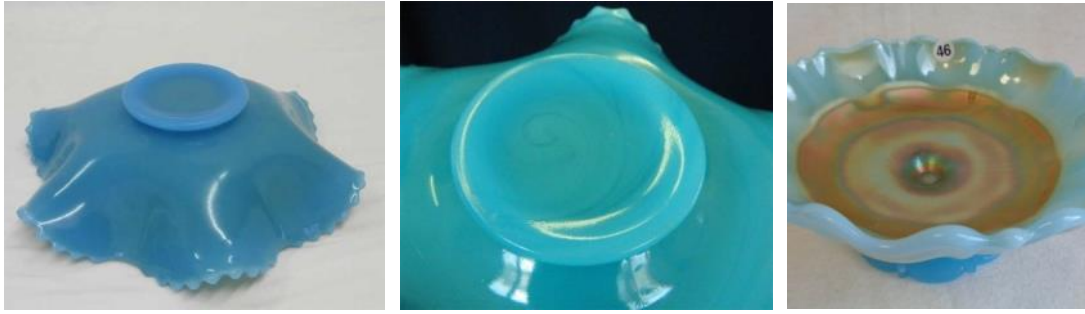
**Blue** (A primary color, typically used when the shade is not mixed with green/red). Fenton originally called this Royal Blue, sometimes people call it Cobalt Blue.



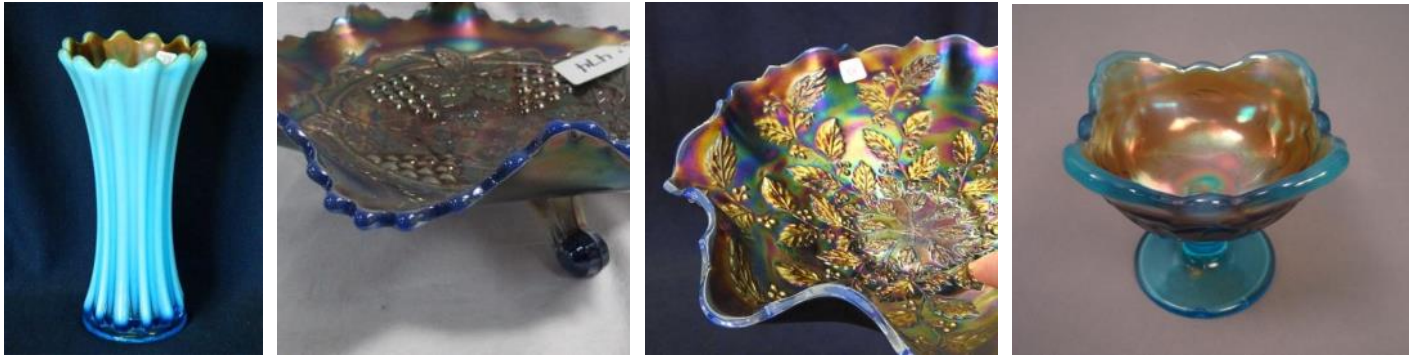
**Blue Jade** (Opaque to translucent light robin's egg-like blue or blue-green glass – at this time, specific only to Northwood Stretch glass patterns – and the **Stretch Glass** collectors call it Jade Blue)



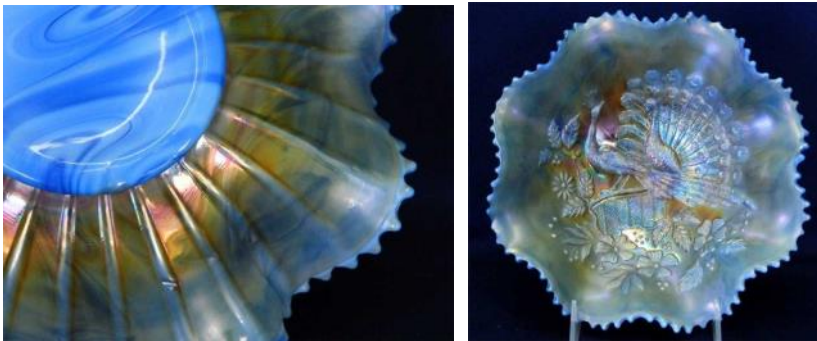
**Blue Milk Glass** (Opaque to translucent light blue (or blue-green) glass – specific only to Westmoreland patterns).



**Blue Opal** (Blue base glass with milky white or milky blue opal tips or edges.) The range of different blue colors that make up this category are all the way across the color scale. Often the opal is so heavy that only the base is actually blue and the opal is a light blue opaque color. We currently have 22 patterns in the HoC database in this color – the majority are Westmoreland. Those that are NOT Westmoreland (like Fenton Holly) tend to be a very Blue base with light opal on the edges (and may not have been production colors).



**Blue Slag** (Opaque marbled Blue base glass – can be called Sorbini) NOT the same as a slag effect, where the base glass has streaks of white in the clear base color – **this is actually marbled**. Only 10 or less pieces of this reported in Carnival Glass. You have to see the base to identify the marbling best.



**Blue Swirl** (Opaque marbled Imperial Art Glass – Free Hand or Lead Lustre pieces are found with this exterior and an iridized interior). The shade of blue is not necessarily the same on all pieces.





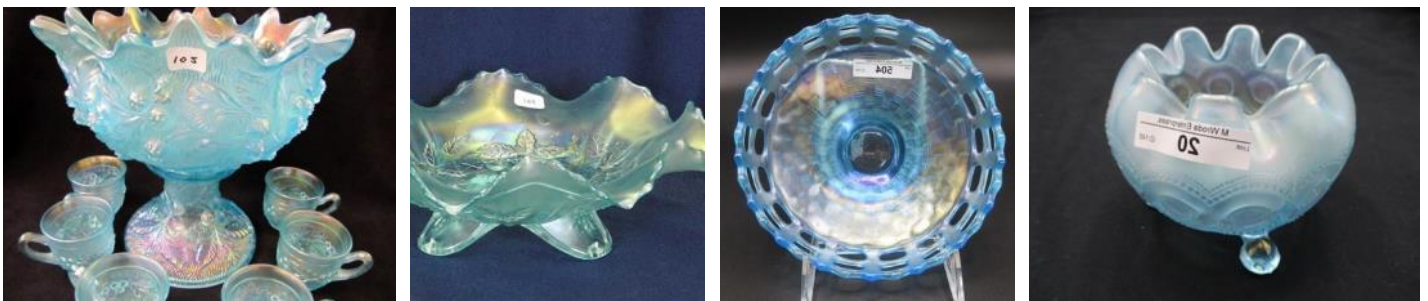
**Celeste Blue** (A light to medium blue with a pastel iridescence (you can see the base color thru the iridescence, there is **NO** overlay)). The iridescence quite often will be 'stretchy'. It can be like a robin's egg blue; we were originally taught that Dugan/Diamond and Fenton were the two manufacturers that made Celeste Blue. [NOTE: The base color is **very** similar on some Celeste Blue pieces to the Northwood Sapphire Blue (with the pastel iridescence), so the two colors are sometimes interchanged.]



**\*Electric Blue** (Blue base glass – (see Blue for reference) **BUT** this color in Carnival Glass is actually more about the iridescence on that blue base glass. The iridescence typically is predominantly Blue with Red highlights (and can have gold or green in addition to those). Said to look like it's 'lit', it should be very vivid.)

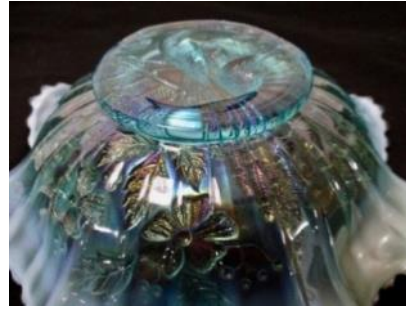


**Ice Blue** (See Aquamarine for Stretch Glass reference - A very pale blue color with pastel iridescence (may have some green-light blue tones and may look 'frosty').)





**Ice Blue Opal** (A very pale blue color with pastel iridescence (may have a 'frosty' look) and milky white or milky light blue edges or tips.)



**Pastel Cobalt Blue** (Cobalt blue with pastel iridescence (no overlay).)



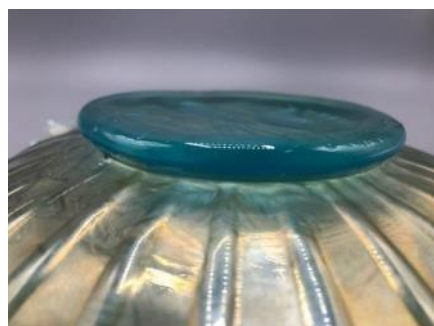
**Cobalt Blue**



**Persian Blue** (Translucent milky robin's egg or light blue, always with a Marigold Overlay- [production color for 4 Fenton patterns].)



**Persian Blue Opal** (To date, all of the items under this color category are Northwood pieces that have a milky light blue base glass and opal edges or tips.)



**Powder Blue** (Described as a 'pale grayish-blue', this color is most often seen with the Marigold Overlay (see below), very few pieces of true Powder Blue). It could be described as a 'washed-out' blue color.)



**Powder Blue Opal** (These would be a 'pale grayish-blue' with opal edges – very few classified as this color, at this time only a few Northwood patterns exist in the Hooked on Carnival database.)



**Powder Blue/Marigold Overlay** (This is, again, pale grayish-blue, but the marigold iridescence usually covers it so that the only way you see it is by turning the piece over and looking at the collar/feet. The majority of pieces in this color category are Fenton.)



**Renninger Blue** (A blue shade that looks to us like Pacific Blue – a shade of cyan with 11% red, 66% green and 79% blue. This is what the internet shows as Pacific Blue:

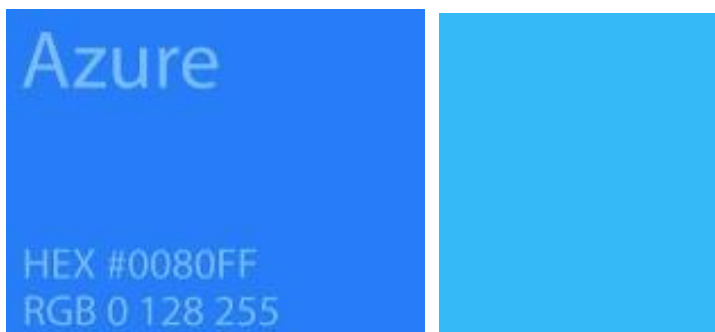
And here are examples from the database:



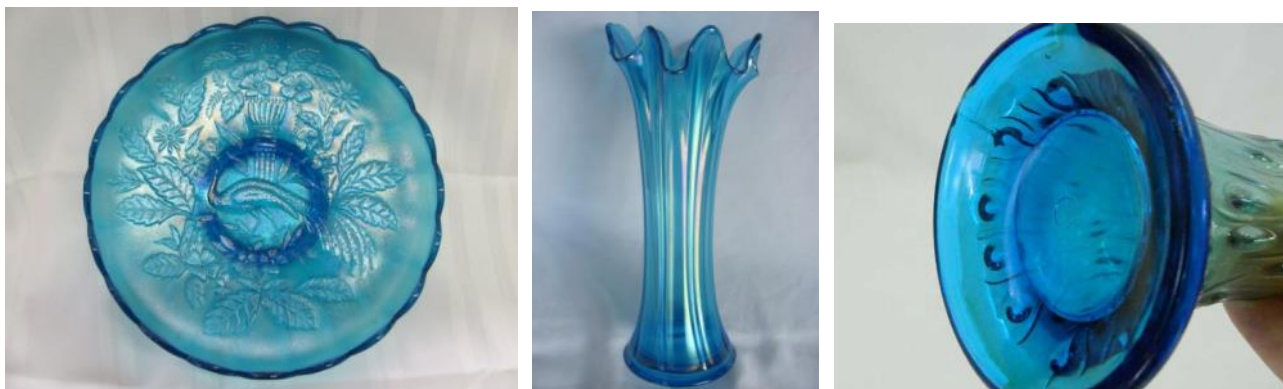


**Sapphire Blue** (Described to us as 'Windex Blue', Sapphire was originally considered to be a Northwood Color (Dugan & Fenton called it Celeste) and it was *only used to describe the pieces with a pastel iridescence.*) This is now occasionally interchanged with Celeste Blue.

It could best be compared to an Azure blue or Deep Sky blue like these from a color chart (depending on the pattern):



Here are some carnival glass database examples:



**Sapphire Blue/Marigold Overlay** (Same as above BUT with a marigold iridescence covering much of the base glass color (**NOT** pastel iridescence))

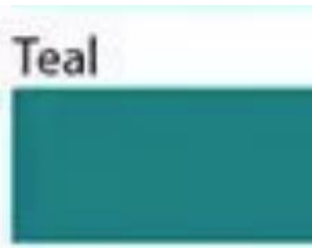


**Smokey Blue** (Very close to powder blue but with a smokey gray look. It should probably be noted that the iridescence is sometimes what is making the 'smokey' part.)





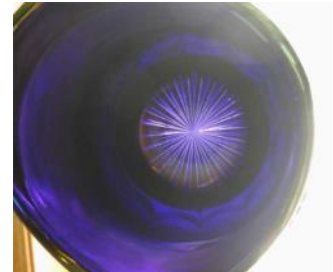
**Teal** (Defined as a deep blue-green color, named for the colored area around the eye of the bird). Quite honestly, we would simply go with the pattern's availability for this one – most things we call Teal in CG appear to be either Turquoise, Aqua or Aquamarine (much more blue than green). Also, typically teal will have a pastel iridescence (like many Imperial patterns that are classified as this color.)



**Teal/Marigold Overlay** (Should be the deep blue-green color with a marigold iridescence making it difficult to see the base glass color in most cases. On the vase below, look at the color far right where no iridescence is affecting the identification.)






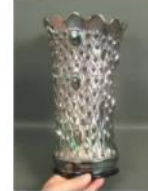






**Violet Blue** (A deep blue - similar to Ultramarine on this color chart picture– violet is described as halfway between blue and purple.) Many carnival pieces are heavily iridized back and front, so difficult to get the color correctly identified. At this time, all pieces identified as this shade are Imperial patterns.



## 2022 Carnival Glass Conventions and Auctions

- March 10-12 **Texas Carnival Glass Club:** Seeck Auctions; Washington County Expo, 1305 E Blue Bell Rd, Brenham, TX 77833, USA and the hotel Comfort Suites, 2350 South Day Street Brenham, Texas <https://texascarnivalglass.org/convention>
- April 2 **Donna & Bob Courts Carnival Glass Collection:** Burns Auction Service, Heritage Community Center, 3558 US Route 62, Millersburg, Ohio
- April 20-23 **Heart of America Carnival Glass Association:** Seeck Auctions; Embassy Suites Hotels, 7640 NW Tiffany Springs Parkway, Kansas City, MO 64153, (816) 891-7788 <https://www.hoacga.com/>
- May 11-14 **Keystone Carnival Glass Club:** Matthew Wroda Auction Services; Holiday Inn, 604 Station Rd, Grantville, PA
- June 9-11 **American Carnival Glass Association:** Matthew Wroda Auction Services; Comfort Suites Hotel And Conference Center, 4810 Tr 366, Berlin, OH 44610 Phone: (330) 893-7400 <https://myacga.com/convention-info>
- July 13-17 **International Carnival Glass Association:** Seeck Auctions, Holiday Inn St. Louis Airport West-Earth City, an IHG Hotel, 3400 Rider Trail S, Earth City, MO 63045
- August 10-13 **Lincoln Land Carnival Glass Club:** Seeck Auctions; Embassy Suites by Hilton, 1200 S Moorland Rd, Brookfield, WI
- August 11-13 **Stretch Glass Society:** Burns Auction Service; Comfort Inn Lancaster County North, 1 Denver Road, Denver, PA 17517
- September 8-10 **New England Carnival Glass Association:** Matthew Wroda Auction Services, Courtyard by Marriott, 4 Sebeth Drive, Cromwell, Connecticut
- October 7-8 **Millersburg Glass Association:** Matthew Wroda Auction Services; Comfort Suites Hotel And Conference Center, 4810 Tr 366, Berlin, OH 44610 Phone: (330) 893-7400
- October 20-22 **Mid-Atlantic Carnival Glass Club:** Burns Auction Service; Ramada Plaza by Wyndham Hagerstown, 1718 Underpass Way, Hagerstown, MD 21740
- November 2-5 **Great Lakes Carnival Glass Club:** Matthew Wroda Auction Services; Ramada by Wyndham Lansing Hotel & Conference Center, 7501 W Saginaw Hwy, Lansing, MI 48917

## Tampa Bay CG Auction Top 10 Sold — February 12

|  |  |   |  |   |
|--|--|---|--|---|
| <p><b>Lot 300</b>   M'BURG MARIGOLD TROUT &amp; FLY PLATE <span style="float: right;">i</span></p>  <p><b>Price Realized:</b><br/>6,500.00 USD</p> | <p><b>Lot 425</b>   N'wood Electric Blue Hearts &amp; Flowers PCE Bowl <span style="float: right;">i</span></p>  <p><b>Price Realized:</b><br/>3,600.00 USD</p> | <p><b>Lot 165</b>   Rare N'Wood Blue G&amp;C Master 14 Pc Punch Set <span style="float: right;">i</span></p>  <p><b>Price Realized:</b><br/>2,500.00 USD</p> | <p><b>Lot 330</b>   N'Wood Purple Elephant Tree Trunk Squatty <span style="float: right;">i</span></p>  <p><b>Price Realized:</b><br/>2,400.00 USD</p>    | <p><b>Lot 335</b>   N'wood Purp. Tree Trunk Funeral Vase/ Plunger <span style="float: right;">i</span></p>  <p><b>Price Realized:</b><br/>2,250.00 USD</p> |
| <p><b>Lot 275</b>   DUGAN PURPLE CHRISTMAS COMOTE <span style="float: right;">i</span></p>  <p><b>Price Realized:</b><br/>1,750.00 USD</p>         | <p><b>Lot 280</b>   Dugan Purple Square Butterfly &amp; Tulip Ftd Bowl <span style="float: right;">i</span></p>  <p><b>Price Realized:</b><br/>1,400.00 USD</p> | <p><b>Lot 225</b>   FANTASTIC EMERALD GREEN IMPERIAL GRAPE <span style="float: right;">i</span></p>  <p><b>Price Realized:</b><br/>1,400.00 USD</p>          | <p><b>Lot 325</b>   Fenton Elec. Blue 1914 Parkersburg BPOE Plate <span style="float: right;">i</span></p>  <p><b>Price Realized:</b><br/>1,300.00 USD</p> | <p><b>Lot 450</b>   N'Wood White Three Fruits Ruffled Bowl <span style="float: right;">i</span></p>  <p><b>Price Realized:</b><br/>1,250.00 USD</p>        |