

The President's Newsletter



Let me start with some good news...Our NECGA webmaster, Steve Lindquist turned "50" on the day of our meeting...Dec. 7th. So we celebrated with cake and balloons...oh, and a glass of wine! Happy Birthday!

Brian Grainger emailed us with an idea for the Spring Fling/Convention...What if people bring glass that they want to swap...trade... with other members????? More to come on this topic.

At the December meeting, we talked about designing an educational pamphlet to leave at antique shops and shows. Steve and Gary put together a "sample" for us and they would like to know your thoughts. Please email NewEnglandCarnivalGlass@gmail.com. They would appreciate hearing from you. This will also be discussed at the February meeting. Costs, amounts...TBD.

Please remember to make your reservations for the Spring Fling prior to March 15th! Saturday night restaurant choice TBD. Norm usually helps us out with this one. There is a good possibility that Gary Lickver will be visiting us for the weekend again.

And the sad news about the passing of two of our NECGA members, Gil and Hutch. Our sympathies to their loved ones.

Kris and I took a trip up to see Bob Preseau in Vermont a few weeks ago. We actually purchased a couple of pieces of glass, so we'll be bringing them to the meeting for our "recent finds". Hope to see you on Feb. 15th.

Sincerely,
President Don Dorais

NECGA Member
Jerry Garrow, Millbrook, NY!
Welcome Back!

Sad News....Gil Corriveau of Sturbridge, MA passed away on Tuesday, December 16th. He was 70 years old and a Charter Member of the New England Carnival Glass Association. We extend our sincere sympathy to his partner, Ben Perez. Many of our New England members may have visited Sturbridge Antiques and purchased glass from Ben and Gil as they had a booth there for many years and still do.

Also, a past member of NECGA, Ted "Hutch" Hutchinson also died on the same day. He was 59 years old from Henniker, NH. Hutch loved his Grape and Cable pattern and collected all the shapes and colors. Our sympathy to his wife, Diana.



Notes from the Sunday, December 7th meeting.

Present at the meeting: Kris & Don, Gary Sullivan, Steve Lindquist, Bruce & Anna, Louie & Charlotte Carpick, Joanne and Clint Andrews, John & Vickie Rowe, Bruce and Anna and Norm.. Show & Tell took place and the meeting started at 1:30 p.m.

A motion to accept the bulletin minutes...all were in favor. A motion to accept the treasury report...all were in favor.

2015 Convention: While Kris, Don, Bob, Steve and Gary were at the Mid-Atlantic Jamboree, we approached Tom and Sandy Monoski from PA to be our guest speakers. They kindly accepted. Theme TBD.

Gary Sullivan once again volunteered to be a seminar speaker.

We will try to get some teaser glass on the website from Tom Burns in advance of the auction.

New Business:

- An idea was raised at the meeting to ask the hotel if members could sell their glass in one room vs. their own hotel room. Then everyone would be together at the same time/same day. Don't know if a cost would be involved. This will be discussed further.
- Another idea was raised for the club to invest in an education pamphlet so we could leave them at antique shops, antique shows, etc. Steve and Gary volunteered to put something together and bring it to the membership.
- Louie reserved the 2015 meeting dates: Feb., 15, April 19, June 14, August 9, October 18 and December 6th. Annual cost to the club is \$270.

Spring Fling: Sunday, April 17th. Make your reservations by March 15th!

For the next December meeting, the members present made a motion to have a pizza party. The cost will be absorbed by the club.

Meeting adjourned at 2:20 p.m.

Theme: Flowers and New Finds

Next Meeting: Sunday, February 15th at noon.

Meal: Soup and Sandwiches

New England Carnival Glass Association Membership Application

Dues: \$ 18.00 per year per household. (Membership renewal is due on your anniversary date)

Name _____

Address _____

City _____ State _____ Zip Code _____

Telephone # _____ - _____ Email address: _____

Send application form and dues (U.S. funds) to: Gary Sullivan, 671 Ridge Road, Wethersfield, CT 06109

Membership includes, bi-monthly meetings, bulletins and all functions and outings. If you would like the bulletin emailed to you (vs. mail), please let us know on this form.

Make checks payable to N.E.C.G.A.

Email _____ Mail _____

Calendar Listings for 2015

Feb 4 -7, 2015

Tampa Bay Carnival Glass Club Convention and Auction, St. Pete Beach, FL, Tom Burns Auction

March 11-14, 2015

Southern California Carnival Glass Club Convention and Auction, Ontario, CA

March 18-22, 2015

Texas Carnival Glass Club Convention and Auction, Dallas, TX, Jim Seeck Auction

April 22-26, 2015

Heart of America Carnival Glass Association Convention and Auction, Kansas City, MO, Jim Seeck Auction

May 6-8, 2015

Keystone Carnival Glass Club Convention and Auction, Grantville, PA

June 17-20, 2015

American Carnival Glass Convention and Auction, Wroda Auction Center, Greenville, OH, Jim Wroda Auction

Sept. 10-12, 2015

New England Carnival Glass Convention and Auction, Tom Burns Auction, Leominster, Mass.

New England
Carnival Glass
Association

FRONT



BACK

www.NECGA.com

The New England Carnival Glass Association is a group of people throughout the Northeast who share a common interest in all things **CARNIVAL GLASS**.

The club holds six meetings a year and an annual convention/auction in September. The convention/auction, one of the largest in New England, takes place the first weekend after labor day during the Brimfield Fair. This is always open to the public.

At our meetings we hold seminars and discussions in order to learn more about the glass but mostly we just have fun. The opportunity to see and hold various pieces of carnival is very educational.

For more information visit us at www.NECGA.com or like us on Facebook.



www.NECGA.com

email: NewEnglandCarnivalGlass@gmail.com

History of Carnival Glass

During the early 1900's, companies were producing expensive iridescent glassware. Then, in 1907, Fenton Art Glass invented a process to produce iridescent wares inexpensively. This iridescent glass became a huge hit with the consumer and became known as "Poor Man's Tiffany". Sold at Woolworths and "five and dimes", production continued through the 1920's. Many shapes were made including vases, water sets, punch sets, table sets, plates, and bowls. Patterns included birds, animals, grapes, berries, flowers, flutes and diamonds.

When made, a mixture of liquid metallic salts was sprayed onto the surface of the hot glass which melted giving the surface the appearance of "oil on water". Because of the process to make it, Carnival Glass is described as iridescent molded or blown pattern glass. The color of the glass comes from the base glass (from clear crystal to deep amethyst) or the iridescence (satin, pumpkin, emerald or electric). The first iridized glass was crystal with an orange/yellow iridescent spray applied called Marigold. Vivid colors followed such as Blue, Amethyst, Green and Red and then pastel colors such as Ice Blue, Ice Green and White. During the initial production period of 1907 to 1930, there were five main companies: Fenton Art Glass of Williamstown, WV; Northwood Glass of Wheeling, WV; Dugan/Diamond Glass of Indiana PA; Millersburg Glass of Millersburg, OH; and Imperial Glass of Bellaire, OH.

Due to the depression, the introduction of mechanized production and changing tastes of the consumer, iridized pattern glass fell out of favor and manufacturers turned to the production of "Depression Glass". It was during this period that manufacturers sold their remaining inventory to traveling carnivals to be used as prizes. This story, told many years later, led to all iridized pattern glass to be referred to as "Carnival Glass".

In the 1950's, individuals re-discovered this iridescent glassware at antique malls and fairs. The glass, now coming out of people's attics, was collected for its beauty, patterns, color and iridescence. Carnival glass clubs formed across the US and hosted meetings and conventions where collectors could come together to learn about the glass. Due to its increasing popularity in the 1960's, glass companies began to revive its production. Two of the original producers began to reproduce it. Imperial marked this new glass with its "IG" mark and Fenton marked its glass with an encircled "Fenton". Carnival glass produced in this period is referred to as Contemporary Carnival Glass while glass from the 1910's and 20's is referred to as Vintage Carnival Glass.

Today, many conventions and auctions, hosted by different clubs, occur each year across the US. Collecting carnival glass got its start in the 1950's but continues today as enthusiastically as ever.

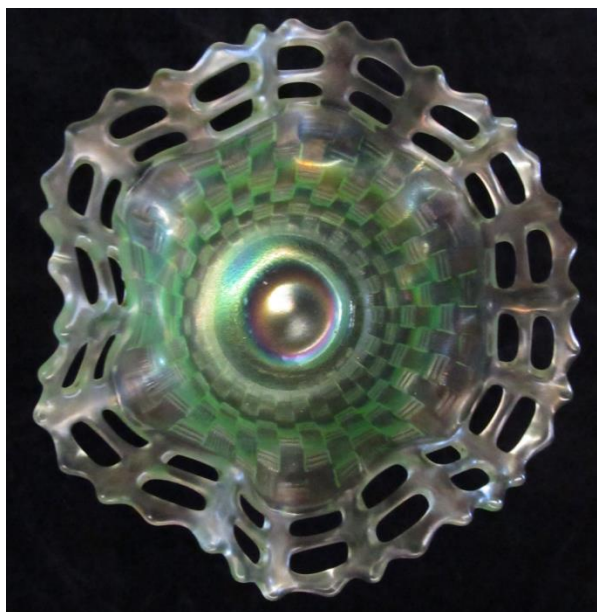
Here is a draft of the rack card that we created.

Let us know what you think. Also, let us know what needs to be added to the text.

Please email your comments to newenglandcarnivalglass@gmail.com



SHOW & TELL...RED, WHITE, GREEN & NEW FINDS



(left) Fenton's
Two Row Open
Edge Ruffled
Basket in Ice
Green



(right) Fenton's
Two Row Two
Sides Up Basket
in Emerald Green



(left) Northwood's
Corn Vase in
Emerald Green

(middle)
Northwood's
Grape & Cable
Hatpin Holder in
Green

(right) Fenton's
Two Row Open
Edge Ruffled
Basket in Red



(right) Fenton's
Holly Compote in
Lime Green with a
Marigold Overlay



(below) Sowerby's
Daisy Block
Rowboat in
Marigold



SPRING FLING
HAMPTON INN & SUITES
900 POST ROAD
WELLS, ME 04090
SAT. APRIL 18 & SUN. APRIL 19

Check-in time- after 2:00p.m. April 18th
MUST RESERVE BY MARCH 15TH

Room Rates- \$ 89.00 - plus tax

Happy Hour- 4:00 p.m. – 5:30 p.m.
(common room will be available for everyone)

Dinner - 6:00 p.m.
Dinner: Restaurant TBD

Free Sunday Morning Breakfast

Meeting: Show & Tell - 10:00 a.m.
Regular meeting to follow

Register under NE Carnival Glass, Call 1-207-646-0555

See You There!!!!

*Antique Shops Nearby, Marginal Way, Ogunquit, The
Ocean, Great Seafood, Good Company!*

COMPASS DESIGN BY DUGAN

Hi There,

This story started last year in August. Gary and Steve were doing a seminar on Dugan glass for the NECGA convention in September and they asked me if I had a

Dugan Heavy Grape bowl???? I didn't have one so that got my juices flowing!!!! I had to find one.....There has not been one up for auction in a long time as these 11" bowls are difficult to find...one can even say they are RARE!!!! The 5" berry bowls are even harder to locate. I finally found one on the Internet and it was a BEAUTIFUL 11" amethyst one with eight ruffles with great iridescence. It came to Canada from Sanger, CA.

Also in August at the WWWCGA convention in Ashville I bought a nice SKI-Star 11" ruffled bowl in amethyst from Gary Lickver also with



great color.... I sent Gary and Steve a few pictures of the Heavy Grape bowl and



now they are after itJust kidding.....Anyway on I@@king at the both bowls closely, I noticed they both have the same geometric or near cut design on the exterior and that these are the only two bowls that Thomas Dugan put this design on. The geometric design is called COMPASS...Because of this design, Heavy Grape and Ski-Star were once thought to be a Millersburg product until they found shards from the Helman diggings.

Millersburg was famous for their Nearcut designs on the exterior of their bowls so at the time one would have to think that it was. I had a peach opalescent Ski-Star ruffled bowl awhile back and when the sunlight hit the compass exterior, the



colorful rays just gleamed off of itWhat a BEAUTIFUL design. Some think that the molds for the Heavy Grape and the Ski-star were lost in the fire of 1912...Maybe that is why they are hard to find. I always admire the workmanship in the molds on the exterior of bowls. It doesn't matter who the maker is, they are all fabulous!!!! So next time you pick up a piece of carnival glass, check out the exterior and you will see the BEAUTY of it ...inside and out.

On finding the Heavy Grape bowl on the internet, I contacted the owner, John Westrick, who runs an antique store part time and is a full time teacher. We talked about carnival glass and antiques in general and got to know one another. I also made a trade with him on a GREAT Dugan Vintage Perfume bottle in amethyst for two pieces of Fenton...not bad EH!!!! I also told him if he was looking for carnival glass to let me know and maybe we could swap or buy off one another again.

As I said before...Carnival Glass People are the BEST.....

By the way...the Dugan Heavy Grape and the Vintage



Perfume Bottle were my Christmas presents....The picture of the elves that says

BUSTED is because Steve and Gary said they were going to send a couple of elves to my place at Christmas time to relieve me of my bowl...Well Jocelyne and I nabbed them red handed... Maybe next year BOYS!!!!

On the closing of this story I would like to wish everybody a HAPPY NEW YEAR and may all of your carnival glass wishes come true...See you all at the Spring Fling in Wells, Maine as I'm going a couple of days early so I can grab up all the nice pieces of glass.



Bye for Now
Brian and Jocelyne

www.CarnivalGlass.com

44 YEARS OF SATISFIED MAIL-ORDER CUSTOMERS
 UPDATES EVERY TWO WEEKS—CARNIVAL GLASS IN MINT CONDITION

Lloyd R. Ward
 P.O. Box 1006, Mayfield, KY 42066
 Tel: (270) 251-2005 • Cell: (270) 970-0599
 E-Mail: lrward@carnivalglass.com

**Thinking of Selling Your Collection?
 Turn Your Carnival Glass into Cash!**

I buy one piece, 20 pieces, or a collection of Carnival

Visit www.CarnivalGlass.com-
 THE Place for Carnival Glass!



Mid-Atlantic Carnival Glass Club Jamboree
 October 22-24th 2015 Featuring the collection of Greg Dilian
 Ramada Plaza Hotel 1718 Underpass Way Hagerstown, Md.
 301-797-2500 A Tom Burns Auction
 Contacts: Steve Grayson sgrayson@copper.net
 Beth Margerum bethmargerum@comcast.net

Club membership \$10 p/yr. via email
 Contact: bethmargerum@comcast.net

NECGA Treasury Report		NECGA Convention Report	
For the period January 1, 2014 thru December 31, 2014		September 2014	
Opening Balance - January 1, 2014	\$5,897.48		
Revenues:		Convention Revenue:	
Dues	801.00	Banquet Meals	1,200.00
Fees	400.00	Mini Auction	932.50
Convention	997.59	Card Game/Donations	220.00
Other	0.00	Tom Burns - Auction	200.00
Total Revenue	2,198.59	Total Convention Revenue	2,552.50
Expenses:		Convention Expenses:	
Postage	168.61	Hotel Costs/Meals	1,200.06
Ink/Paper/Envelopes	391.35	Guest Speaker Fee	0.00
Supplies	20.70	Pizza Party	130.95
Web site	0.00	Room Display Awards	68.00
Hall Rental	270.00	Hospitality Room	155.90
Printer	351.96		
Total Expense	1,202.62	Total Convention Expenses:	1,554.91
Increase /(Decrease) in Fund Balance	995.97		
Ending Fund Balance - Dec 31, 2014	\$6,893.45	Net Convention Profit / (Loss)	\$997.59
2015 Hotel & Hall Deposit	(870.00)		
Ending Cash Balance - Dec 31, 2014	\$6,023.45		

UPCOMING TOM BURNS AUCTIONS: Saturday, March 21st, Hagerstown, MD
 Saturday, April 18th, Pittsburgh, PA, Saturday, May 9th, Bath, NY (non-carnival auction),
 and Saturday, June 6th in Bath, NY

2015 NECGA MEETING DATES

January						
S	M	T	W	TH	F	S
				1	2	3
4	5	6	7	8	9	10
11	12	13	14	15	16	17
18	19	20	21	22	23	24
25	26	27	28	29	30	31

February						
S	M	T	W	TH	F	S
1	2	3	4	5	6	7
8	9	10	11	12	13	14
15	16	17	18	19	20	21
22	23	24	25	26	27	28

March						
S	M	T	W	TH	F	S
1	2	3	4	5	6	7
8	9	10	11	12	13	14
15	16	17	18	19	20	21
22	23	24	25	26	27	28
29	30	31				

April						
S	M	T	W	TH	F	S
			1	2	3	4
5	6	7	8	9	10	11
12	13	14	15	16	17	18
19	20	21	22	23	24	25
26	27	28	29	30		

Spring Fling - Wells, ME

May						
S	M	T	W	TH	F	S
					1	2
3	4	5	6	7	8	9
10	11	12	13	14	15	16
17	18	19	20	21	22	23
24	25	26	27	28	29	30
31						

June						
S	M	T	W	TH	F	S
	1	2	3	4	5	6
7	8	9	10	11	12	13
14	15	16	17	18	19	20
21	22	23	24	25	26	27
28	29	30				

July						
S	M	T	W	TH	F	S
			1	2	3	4
5	6	7	8	9	10	11
12	13	14	15	16	17	18
19	20	21	22	23	24	25
26	27	28	29	30	31	

August						
S	M	T	W	TH	F	S
						1
2	3	4	5	6	7	8
9	10	11	12	13	14	15
16	17	18	19	20	21	22
23	24	25	26	27	28	29
30	31					

September						
S	M	T	W	TH	F	S
		1	2	3	4	5
6	7	8	9	10	11	12
13	14	15	16	17	18	19
20	21	22	23	24	25	26
27	28	29	30			

NECGA Convention,
Leominster, Mass

October						
S	M	T	W	TH	F	S
				1	2	3
4	5	6	7	8	9	10
11	12	13	14	15	16	17
18	19	20	21	22	23	24
25	26	27	28	29	30	31

November						
S	M	T	W	TH	F	S
1	2	3	4	5	6	7
8	9	10	11	12	13	14
15	16	17	18	19	20	21
22	23	24	25	26	27	28
29	30					

December						
S	M	T	W	TH	F	S
		1	2	3	4	5
6	7	8	9	10	11	12
13	14	15	16	17	18	19
20	21	22	23	24	25	26
27	28	29	30	31		